

WATER FEELINGS collection by GIFRE

**GIFRE** Tel (34) 972 255 753 · [pere@gifre.com](mailto:pere@gifre.com) · [www.gifre.com](http://www.gifre.com)  
Espronceda, 12-14 17480 · Roses. (Spain)



SPLASH sculpture. EXPO ZARAGOZA 2008

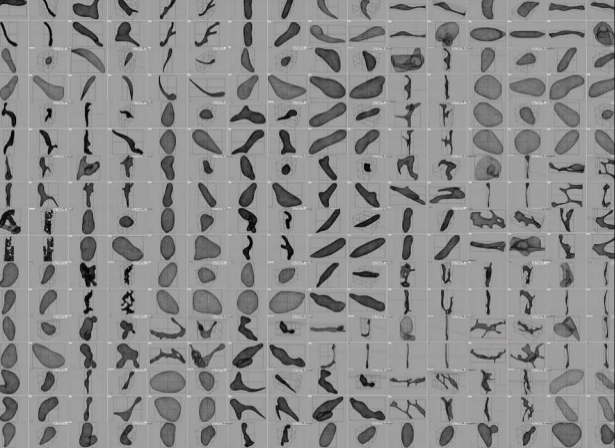
Pere Gifre,

He is an industrial designer and conceptual artist born in Figueres in 1974, specializes in VFX design and development for sculpture, scenography and architecture.

His skills as an industrial designer, along with an extensive knowledge of visual effects, have enabled him to collaborate with artists such as Ferran Adrià, Enric-Ruiz, Fran Fernández, Frederic Amat, Olga Subirós, Mona Kim, Simon Taylor, and Todd Palmer developing projects for their designs.

Projects developed include the "Musical Gaudi" in the Barcelona Teatro Musical, the fishskin sculptures for the NY Aquarium, the opera "Viaje a Simorgh" for the Teatro Real Madrid, the sculpture "Splash" for Expo Zaragoza 2008, and recently the el Bulli R+D tableware collection.

More information: [www.gifre.com](http://www.gifre.com)



At present, he is also developing his own projects. Recent works include new sculptures whose design processes predominantly involve the adaption for engineering, through the use of visual effects, of forms and processes to be found in our natural environment.

This hyperrealism, generated through the reproduction of physical phenomena such as nebula behaviour, the force of a tornado or the impact of a meteorite against a cascade of water, is captured at the precise moment, giving us the necessary information in order to generate the pieces using complicated CAD/CAM processes.

Technological advances have enabled the materialization of formal complex ideas which before would have been impossible to accomplish. These ideas are generated through study, by provoking accidents in search of logical chaos, transforming sounds into solid structures or designing through the use of intelligent textures or light.

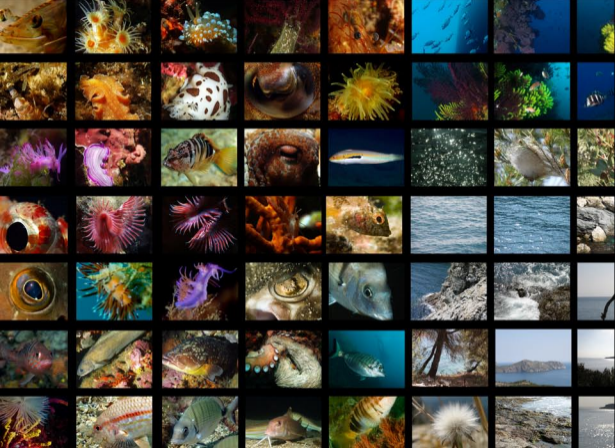
This geometrical cyberspace can recreate our thoughts through simulations that prolong our dreams, creating controlled morphological chaos which reveals new forms before impossible to visualize.

Pere Gifre



## WATER FEELINGS collection

The collection consists of 6 pieces of silver plated brass designed by Pere Gifre.  
The collection is based on water, the representation of itself, its behavior, its structure and its relationship with the nature that surrounds it.



For over 3,800 million years... Nature has evolved....  
Observe it, understand it, interpret it, represent it, feel it...  
Discovering new secrets...



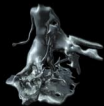
VORTEX



NEBULA



IMPACT



MELTWOMAN



CALA MONTJOI WAVE



WATER VOLCANO

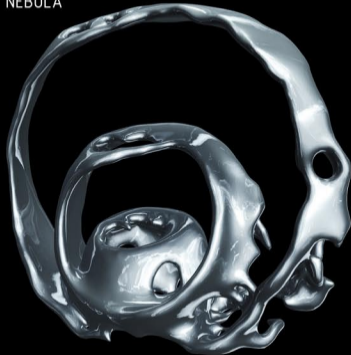
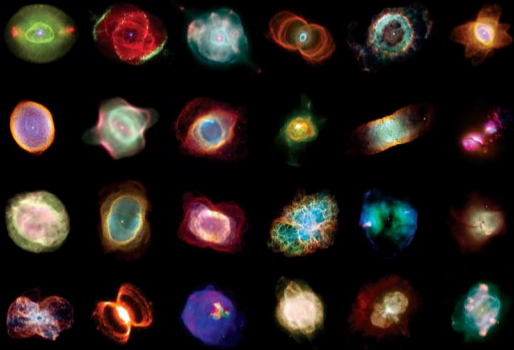


VORTEX

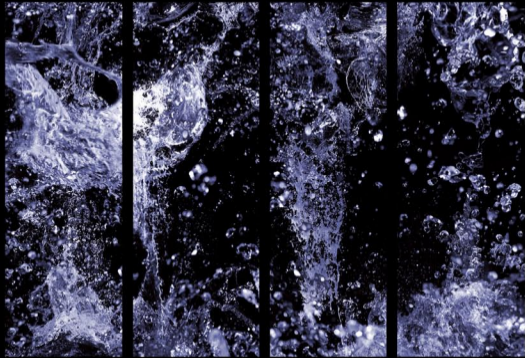
Silver plated brass.  
12 x 11 x 32 cm.



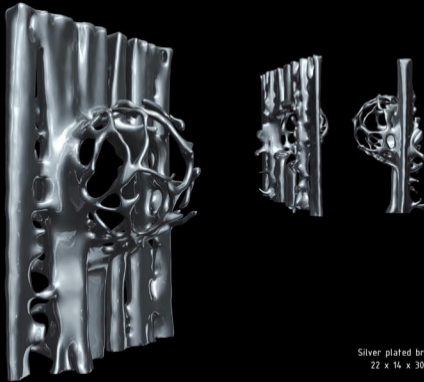
NEBULA



Silver plated brass.  
27 x 11 x 24 cm.



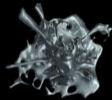
IMPACT



Silver plated brass.  
22 x 14 x 30 cm.

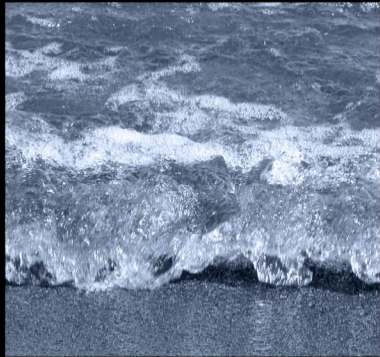


MELTWOMAN



Silver plated brass.  
32 x 34 x 31 cm.





## CALA MONTJOI WAVE



SMALL  
Silver plated brass.  
25 x 5 x 5 cm.

BIG  
Silver plated brass.  
45 x 9 x 9 cm.



## WATER VOLCANO

SMALL  
Silver plated brass.  
27 x 13,5 x 8,5 cm.

BIG  
Silver plated brass.  
36 x 18 x 12 cm.

